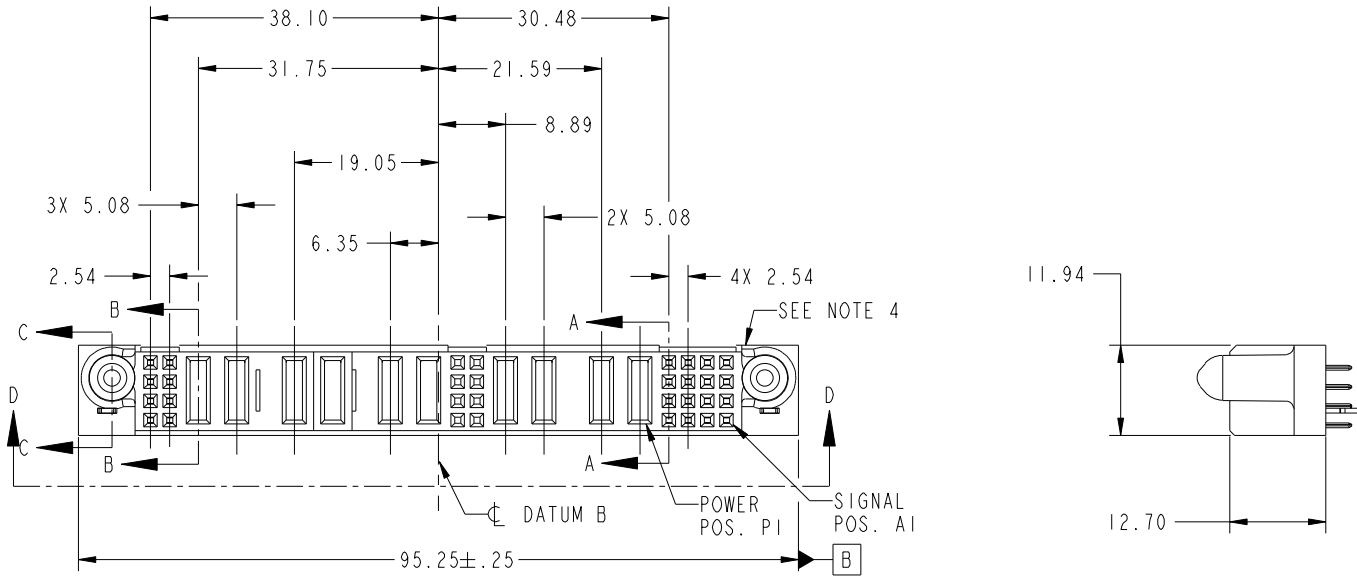


Tous droits strictement reserves. Reproduction ou communication a des tiers interdite sous quelque forme que ce soit sans autorisation ecrite du proprietaire. Propriete de c.FCI. Droits de reproduction FCI.

All rights strictly reserved. Reproduction or issue to third parties in any form whatever is not permitted without written authority from the proprietor. Property of FCI. Copyright FCI.



| | | | | | | | | | | | | | | | | | | | | | | | | | | |
|------------------------|------------------|--------|-------|----|----|----|----|----|-----|----|-----|-------|----|---------|----|----|----|----|----|-----|----|----|----|----|----|----|
| PRODUCT NUMBER | ROWS | SIG | POWER | | | | | | | | SIG | POWER | | | | | | | | SIG | | | | | | |
| | | E2 8 7 | P10 | P9 | P8 | P7 | P6 | P5 | 6 5 | P4 | P3 | P2 | P1 | 4 3 2 1 | E1 | | | | | | | | | | | |
| 51940-007-- NOTE: 3 | D C B A | HA | EE | EE | PD | PD | PD | PD | PA | PA | XX | XX | XX | XX | PD | PD | PD | PD | EE | EE | EE | EE | EE | EE | EE | HA |



| CODE | DIM "M" MATING LENGTH | CONTACT TYPE |
|------|-----------------------|--------------|
| E | [N/A] | SIGNAL |
| PA | [1.07] | POWER |
| PD | [2.34] | POWER |
| HA | [N/A] | HOLD-DOWN |
| X | OMITTED | OMITTED |

| | | | | | | | | | | | |
|-------------|-----------|-------|----------|----------|-------------|---------------------------------------|--|----------------|--|---|--|
| mat'l code | | | | SEE NOTE | | tolerances unless otherwise specified | | CUSTOMER | | www.fciconnect.com | |
| lir | ecn no. | dr | date | linear | 0.X ±0.5 | COPY | | projection | | title | |
| A | V20031 | DAI | 01/09/02 | | 0.XX ±0.25 | MM | | | | 16S + 4P + 8S + 6P + 8S VERTICAL SOLDER RECEPTACLE | |
| B | V20201 | DAI | 01/31/02 | angles | 0.XXX ±0.10 | scale | | product family | | code | |
| C | V20634 | JWS | 04/03-02 | | 0° ±2° | 1:1 | | PwrBlade | | 213 | |
| D | V03-0650 | TAB | 06/13/03 | dr | D. INGRAM | 01/09/02 | | size | | sheet | |
| E | V03-1092 | TAB | 10/14/03 | enrg | J. ALLISON | 01/09/02 | | dwg no | | 1 of 4 | |
| F | DG05-0304 | GuoJM | 09/26/05 | chr | J. ALLISON | 01/09/02 | | A | | 51940-007 | |
| G | DG07-0498 | JW | 09/15/08 | appd | J. ALLISON | 01/09/02 | | | | | |
| sheet index | revision | G | G | G | G | | | | | | |
| | sheet | 1 | 2 | 3 | 4 | | | | | | |

A

A

B

B

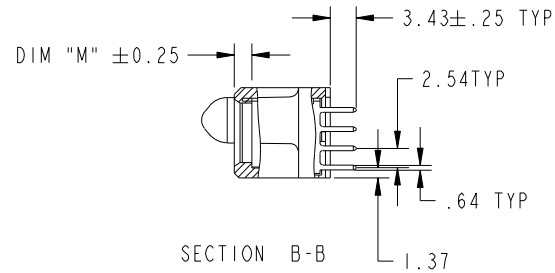
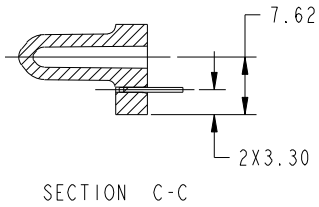
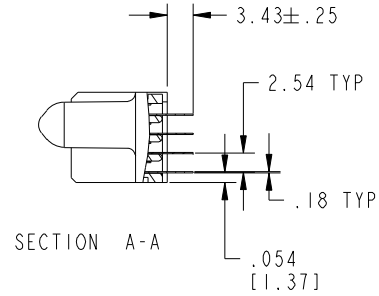
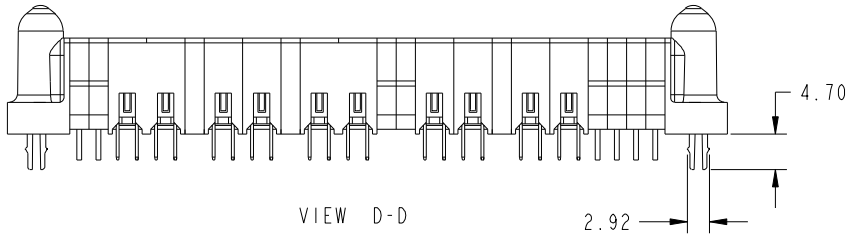
Tous droits strictement reserves. Reproduction ou communication a des tiers interdite sous quelque forme que ce soit sans autorisation ecrite du proprietaire. Propriete de c FCI. Droits de reproduction FCI.

All rights strictly reserved. Reproduction or issue to third parties in any form whatever is not permitted without written authority from the proprietor. Property of FCI. Copyright FCI.



PRODUCT NUMBER

51940-007--
NOTE: 3



| | | | | | | | | | |
|-------------|---------|----------------|------|---------------------------------------|---------------------|------------|--|----------------------------|--|
| mat'l code | | SEE NOTE | | tolerances unless otherwise specified | | CUSTOMER | | www.fciconnect.com | |
| lir | ecn no. | dr | date | linear | 0.X ± 0.5 | COPY | | title | |
| G | | | | | 0.XX ± 0.25 | projection | | 16S + 4P + 8S + 6P + 8S | |
| | | | | angles | 0.XXX ± 0.10 | | | VERTICAL SOLDER RECEPTACLE | |
| | | | | | 0° ± 2° | | | product family | |
| | | | | dr | D. INGRAM 01/09/02 | MM | | PwrBlade | |
| | | | | engr | J. ALLISON 01/09/02 | | | code | |
| | | | | chr | J. ALLISON 01/09/02 | 1:1 | | 213 | |
| | | | | appd | J. ALLISON 01/09/02 | A | | sheet | |
| sheet index | | revision sheet | | | | 51940-007 | | 2 | |

cage code 2856

Pro/E

PDM: Rev:G

STATUS: Released

Printed: Sep 26, 2008

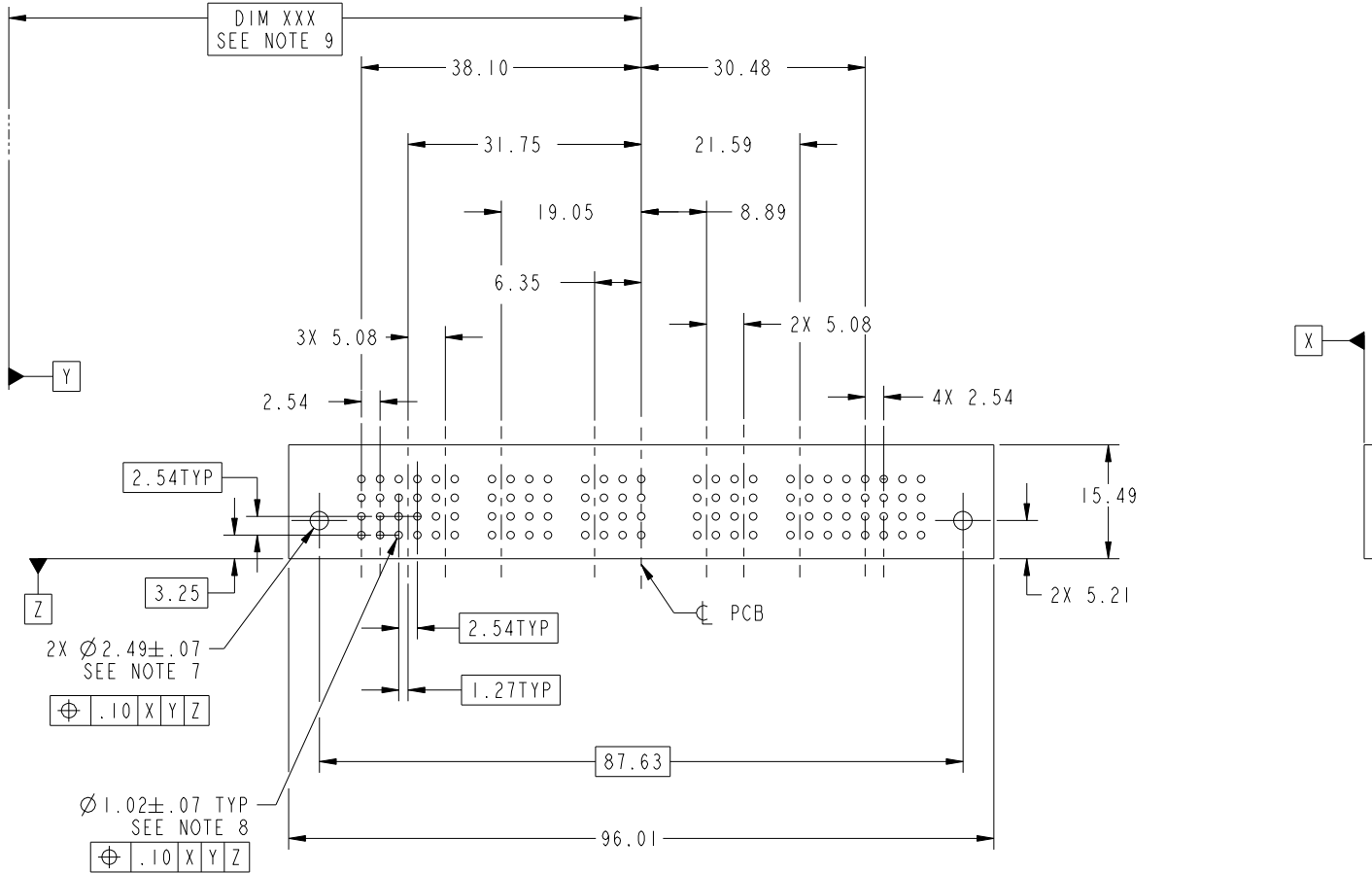
Tous droits strictement réservés. Reproduction ou communication a des tiers interdite sous quelque forme que ce soit sans autorisation écrite du propriétaire. Propriété de c.FCI. Droits de reproduction FCI.

All rights strictly reserved. Reproduction or issue to third parties in any form whatever is not permitted without written authority from the proprietor. Property of FCI. Copyright FCI.



PRODUCT NUMBER

51940-007--
NOTE: 3



| | | | | | | | | | |
|-------------|---------|----------------|------|---------------------------------------|---------------------|------------|--|----------------------------|--|
| mat'l code | | SEE NOTE | | tolerances unless otherwise specified | | CUSTOMER | | www.fciconnect.com | |
| lir | ecn no. | dr | date | linear | 0.X ± 0.5 | COPY | | title | |
| G | | | | | 0.XX ± 0.25 | projection | | 16S + 4P + 8S + 6P + 8S | |
| | | | | angles | 0.XXX ± 0.10 | | | VERTICAL SOLDER RECEPTACLE | |
| | | | | | 0° ± 2° | | | product family | |
| | | | | dr | D. INGRAM 01/09/02 | MM | | PwrBlade | |
| | | | | enrg | J. ALLISON 01/09/02 | | | code | |
| | | | | chr | J. ALLISON 01/09/02 | scale | | 213 | |
| | | | | appd | J. ALLISON 01/09/02 | 1:1 | | sheet | |
| sheet index | | revision sheet | | | | | | 3 | |
| | | | | | | | | A 51940-007 | |

cage code 2856

1 | 2

3

4

A

A

B

B

1 | 2

Pro/E

PDM: Rev:G

4

Tous droits strictement reserves. Reproduction ou communication a des tiers interdite sous quelque forme que ce soit sans autorisation ecrite du proprietaire. Propriete de c.FCI. Droits de reproduction FCI.

All rights strictly reserved. Reproduction or issue to third parties in any form whatever is not permitted without written authority from the proprietor. Property of FCI. Copyright FCI.



1 | 2

3

4

PRODUCT NUMBER
51940-007--
NOTE: 3

NOTES:

1. DIMENSIONS AND TOLERANCES ARE IN ACCORDANCE WITH ASME Y14.5M, 1994 UNLESS OTHERWISE SPECIFIED.

CONNECTORS NOTES:

2. HOUSING MATERIAL: UL 94 V-0 GLASS FILLED HIGH TEMP THERMO PLASTIC
POWER CONTACT MATERIAL: COPPER ALLOY
SIGNAL PIN MATERIAL: COPPER ALLOY

△3. PLATING:
SEE ITEM 5 & 6 IN PRINT 10064183 FOR PLATING SPEC OF 51940-007; 51940-007LF PRESPECTIVELY

4. "MANUFACTURER" NAME, P/N, AND DATE CODE TO APPEAR ON THIS SURFACE.

5. PRODUCT SPECIFICATION GS-12-149.

PCB - NOTES:

6. ALL HOLE DIAMETERS ARE FINISHED HOLE SIZE.

7. HOLD DOWN THROUGH HOLES ARE UNPLATED.

8. Ø 1.151±0.025 DRILLED HOLES PLATED WITH:
0.008 MIN SnPb OR Sn OVER 0.03
TO 0.08 Cu PLATING TO ACHIEVE
Ø 1.02±.07 HOLE.

9. "DIM XXX" TO BE DETERMINED BY THE CUSTOMER.

10. A △ SYMBOL WILL BE NEXT TO ANY DIMENSION, VIEW, OR NOTE WHICH HAS BEEN MODIFIED WITH THE CURRENT DRAWING REVISION.

| | | | | | | | | | | | |
|-------------|----------------|----|------|----------|-------------|---------------------------------------|------------|----------|-------------------|----------------------------|--|
| mat'l code | | | | SEE NOTE | | tolerances unless otherwise specified | | CUSTOMER | | www.fciconnect.com | |
| lir | ecn no. | dr | date | linear | 0.X ±0.5 | | COPY | | scale 1:1 | title | |
| G | | | | | 0.XX ±0.25 | | projection | | | 16S + 4P + 8S + 6P + 8S | |
| | | | | | 0.XXX ±0.10 | | | | | VERTICAL SOLDER RECEPTACLE | |
| | | | | angles | 0° ±2° | | | | product family | | |
| | | | | dr | D. INGRAM | 01/09/02 | | | PwrBlade | | |
| | | | | engr | J. ALLISON | 01/09/02 | | | code | 213 | |
| | | | | chr | J. ALLISON | 01/09/02 | | | size | A | |
| | | | | appd | J. ALLISON | 01/09/02 | | | dwg no | 51940-007 | |
| sheet index | revision sheet | | | | | | | | sheet | 4 | |

1 | 2

Pro/E

PDM: Rev:G

STAT:US:Released

Printed: Sep 26, 2008

cage code 2856

4